



Campus Executive Director

Adam
Manchester
EXT. 156
2018

amanchester@benchmarkquality.com



**Director of
Business
Administration
Accounting**

Ann
Attaway
EXT. 117
1990

aattaway@benchmarkquality.com



**Trad Care Nurse
Manager**

Ashley
Cornelio
EXT. 161
2019

acornelio@benchmarkquality.com



**Program
Director**

Carolyn
Roycroft
EXT. 137
2018

croycroft@benchmarkquality.com



**Director of
Community
Relations**

Cassi
Braithwaite
508-734-5605
2023

cbraithwaite@benchmarkquality.com



**Director
Environmental
Services**

David
Marascio
EXT. 113
2008

dmarascio@benchmarkquality.com



**Mind and Memory
Memory Director**

Kara
Miller
EXT. 129
2023

kmiller3@benchmarkquality.com



**Concierge
Aldridge House**

Karen
Connelly
EXT. 101
2014

kconnelly@benchmarkquality.com



**Director of Food and
Beverages Dining
Service**

Lacey
Rainey
EXT. 127
2023

lrainey@benchmarkquality.com



**Director of
Community
Relations**

Meaghan
Lyver
EXT. 164
2021

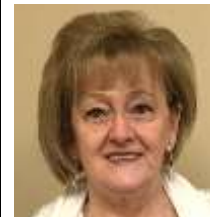
mlyver@benchmarkquality.com



**Senior Director of
Community
Relations**

Patrick
McShane
EXT. 227
2018

pmcshane@benchmarkquality.com



**Dining Room
Manager**

Patti
Johnson
EXT. 153
1998

pjohnson@benchmarkquality.com



**Human Resources
Director**

Paula
Kalafarski
EXT. 124
2022

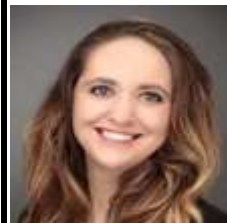
pkalafarswki@benchmarkquality.com



**Move in
Coordinator**

Staci
Dooley
508-734-6952
2019

sdooley@benchmarkquality.com



**Resident Care
Director**

Tasha
Thomas
EXT. 151
2017

tthomas@benchmarkquality.com